

DUK



- Measuring range:
0.08 - 20 ... 2.5 - 630 l/min
- Accuracy: 0.7 % of reading + 0.7 % of full scale
- Range span: 250
- p_{max} : 16 bar; t_{max} : 120 °C
- Connection: G ½ ... G 3, ½" ... 3" NPT female
- Material: brass or stainless steel 1.4408
- Analogue, frequency and switching outputs, compact electronic with digital display, dosing and counter electronic



KOBOLD companies worldwide:

ARGENTINA, AUSTRALIA, AUSTRIA, BELGIUM, BULGARIA, CANADA, CHILE, CHINA, COLOMBIA, CZECHIA, EGYPT, FRANCE, GERMANY, GREAT BRITAIN, HUNGARY, INDIA, INDONESIA, ITALY, MALAYSIA, MEXICO, NETHERLANDS, PERU, POLAND, REPUBLIC OF KOREA, ROMANIA, SINGAPORE, SPAIN, SWITZERLAND, TAIWAN, THAILAND, TUNISIA, TURKEY, USA, VIETNAM

KOBOLD Messring GmbH
 Nordring 22-24
 D-65719 Hofheim/Ts.
 Head Office:
 +49(0)6192 299-0
 +49(0)6192 23398
 info.de@kobold.com
 www.kobold.com

Description

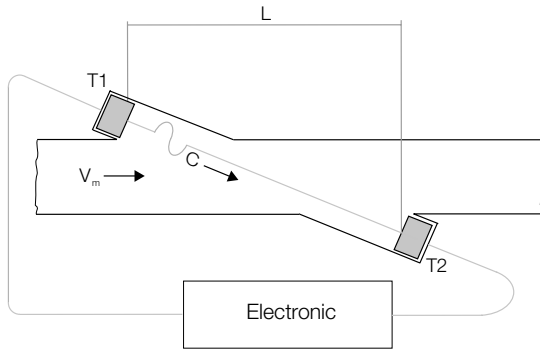
The new KOBOLD type DUK flow meters are used for the measurement, monitoring, metering and dosing of low viscosity fluids.

The devices work on the principle of the difference in running times. This is based on the fact that ultrasonic waves in a medium are influenced by the speed of flow.

Two sensors mounted opposite one another in the pipeline function simultaneously as transmitter and receiver of ultrasound signals.

If there is no flow, then the running times of both signals are identical. If the medium is flowing, then the running time of the signal against the flow is longer than that with the flow.

The running time difference, which is determined by a microprocessor, is proportional to the speed of flow.



The devices can be equipped with a switching output, a frequency output or an analogue output. In addition, a compact circuit can be selected that features a digital display, a switching output and an analogue output.

The device series is rounded off by an optionally available dosing and meter circuit. The meter circuit indicates the momentary flow rate in the first line of the display and the partial or total quantity in the second line. A dosing circuit controls simple filling tasks and similarly measures flow rates, total amounts and filling amounts. The analogue output and two relay outputs can be used for further processing of the signals.

Advantages

- High range span of 1:250
- Small pressure loss
- High repeat accuracy ± 0.1 % of full scale
- Independent from density and temperature

Areas of Application

- Machine building
- Automotive
- Robotic
- Cooling
- Hot water

Technical Details

Sensor

- Measuring principle: ultrasonic
- Range: see table
- Medium: water with max. 1 % solid
- Viscosity: max. 5 mm²/s
- Accuracy: 0.7 % of reading + 0.7 % of full scale
- Repeat accuracy: ± 0.1 % of full scale
- Mounting position: in all directions, flow in direction of the arrow (horizontal: electronic on top or below)
- In-/Outlet: 10 x DN
- Media temperature: -20...+90 °C
-20...+120 °C (high temp. version)
- Ambient temperature: -20 ... + 70 °C
- Response time t90: approx. 0.5...1 s at flow change > 10 % FS (depending on electronic version)
- Pressure: 0 ... 16 bar
- Pressure loss: max. 150 mbar at full scale
- Protection: IP 65
- Wetted Parts**
- Sensor housing: brass or stainless steel 1.4408
- Sensors: PEEK
- Seal: NBR, other on request
high temp. version FPM

Measuring Ranges and Weights

Model	Measuring range [l/min]	Size [G/NPT]	DUK-...S30x DUK-...F3xo DUK-...Lxx3	DUK-...C3xx	DUK-...Exxx DUK-...Gxxx	DUK with ADI 24 V	DUK with ADI 230/115/48 V
DUK-1xx4	0.08 - 20	½"	approx. 850 g	approx. 1050 g	approx. 1000 g	approx. 2150 g	approx. 2700 g
DUK-1xx5	0.16 - 40	¾"	approx. 1050 g	approx. 1250 g	approx. 1200 g	approx. 2350 g	approx. 2900 g
DUK-1xx6	0.25 - 63	1"	approx. 1450 g	approx. 1650 g	approx. 1600 g	approx. 2750 g	approx. 3300 g
DUK-1xx8	0.6 - 150	1½"	approx. 2350 g	approx. 2550 g	approx. 2500 g	approx. 3650 g	approx. 4200 g
DUK-1xx9	1 - 250	2"	approx. 3800 g	approx. 4000 g	approx. 3950 g	approx. 5100 g	approx. 5650 g
DUK-1xxB	2.5 - 630	3"	approx. 7100 g	approx. 7300 g	approx. 7250 g	approx. 8400 g	approx. 8950 g



DUK-...S300, DUK-...S30D

Display: Duo-LED for switch status
 Switching output (..S300): relay SPDT max. 1 A/30 V_{DC}
 Switching output (..S30D): aktive 24 V_{DC}, N/C and N/O
 Switch point: 10...90% FS in 10% - steps that can be configured by the customer using a rotary switch
 Power supply: 24 V_{DC} ± 20 %
 Power consumption: 30 mA
 Electrical connection: plug M 12, 5-pin
 Meas. range overflow: flash of the DUO-LED (red/green) from 105 % of full scale

DUK-...F300, DUK-...F390

Impulse output: PNP, open collector, max. 200 mA
 Frequency at F.S.: 500 Hz (...F300)
 50 ... 1000 Hz (...F390) proportional to flowrate
 Power supply: 24 V_{DC} ± 20 %
 Power consumption: 25 mA
 Electrical connection: plug M 12, 5-pin
 Meas. range overflow: F_{out} approx. 2 kHz from 105 % of full scale

DUK-...L303; DUK-...L343

Output: 0(4)-20 mA, 3-wire
 Load: max. 500 Ω
 Power supply: 24 V_{DC} ± 20 %
 Power consumption: max. 45 mA
 Electrical connection: plug M 12x1
 Meas. range overflow: I_{out} approx. 20.5 mA from 103 % of full scale

DUK-...L443 (usage with AUF-3000)

Output: 4 - 20 mA, 3-wire
 Load: max. 500 Ω
 Power supply: 24 V_{DC} ± 20 %
 Power consumption: max. 45 mA
 Electrical connection: plug DIN 43650
 Meas. range overflow: I_{out} approx. 20.5 mA from 103 % of full scale

DUK-...C3xx (Compact electronic)

Display: 3-digit LED
 Analogue output: 0(4)...20 mA adjustable (only DUK-...C34x)
 Load: max. 500 Ω
 Switching output: 1(2) semiconductor PNP or NPN, set at factory
 Contact function: N/C-N/O-frequency programmable (approx. 1400 Hz at F.S., uncalibrated)
 Settings: via 2 buttons
 Power supply: 24 V_{DC} ± 20 %
 Power consumption: approx. 100 mA
 Electrical connection: plug M 12x1

DUK-...Exxx (Counter electronic)

Display: LCD, 2 x 8 digit, illuminated total, part and flow quantities, units selectable
 Analogue output: 0(4)...20 mA adjustable
 Load: max. 500 Ω
 Switching output: 2 relays, max. 30 V_{AC/DC}/2 A/60 VA
 Settings: via 4 buttons
 Functions: reset, MIN/MAX memory, flow monitor, monitoring for part and total quantity, language
 Power supply: 24 V_{DC} ± 20 %, 3-wire
 Power consumption: approx. 170 mA
 Electrical connection: cable connection or M12 plug

More technical details see data sheet ZED.

DUK-...Gxxx (Dosing electronic)

Display: LCD, 2 x 8 digit, illuminated dosing-, total-, and flow quantity, units selectable
 Analogue output: 0(4)...20 mA adjustable
 Load: max. 500 Ω
 Switching output: 2 relays, max. 30 V_{AC/DC}/2 A/60 VA
 Settings: via 4 buttons
 Functions: dosing (relay S2), start, stop, reset, fine dosing, correction amount, flow switch, total quantity, language
 Power supply: 24 V_{DC} ± 20 %, 3-wire
 Power consumption: approx. 170 mA
 Electrical connection: cable connection or M12 plug

More technical details see data sheet ZED.

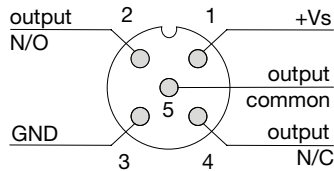
DUK with ADI electronic

Display: bar graph and 5-digit digital display
 Analogue output: 0(4) ... 20 mA, 0 ... 10 V_{DC}
 2 Switching outputs: relay /changeover contact max. 250 V_{AC}, 5 A resistive load max. 30 V_{DC}/5 A
 Settings: via 4 buttons
 Power supply: 100 ... 240 V_{AC} ± 10% or 18 ... 30 V_{AC}/10 ... 40 V_{DC}
 Electrical connection: pluggable terminal block via cable gland

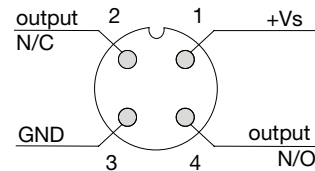
More technical details see data sheet ADI.

Electrical Connection

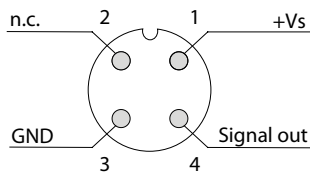
DUK-...S300



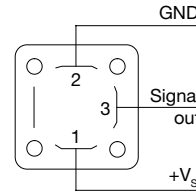
DUK-...S30D



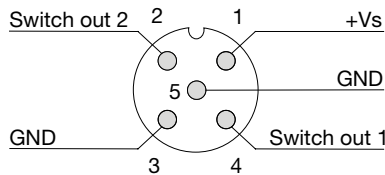
DUK-...F3x0, DUK-...L3x3



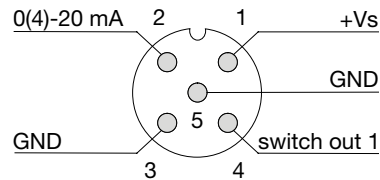
DUK-...L443



DUK-...C30*



DUK-...C34*

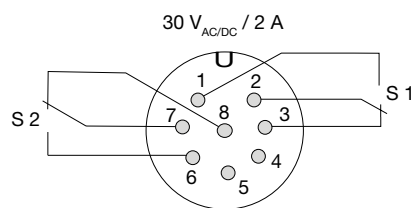
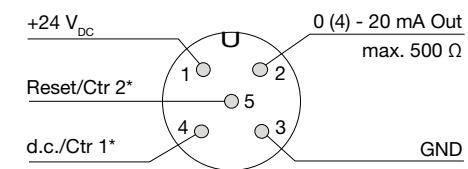


DUK-...E14R, DUK-...G14R Cable Connection

Wire number	DUK-...E14R counter electronic	DUK-...G14R dosing electronic
1	+24 V _{DC}	+24 V _{DC}
2	GND	GND
3	0(4)-20 mA	0(4)-20 mA
4	GND	GND
5	reset part quantity	Control 1*
6	n. c.	Control 2*
7	relay S1	relay S1
8	relay S1	relay S1
9	relay S2	relay S2
10	relay S2	relay S2

* Control 1 <-> GND: Start-Dosing
 Control 2 <-> GND: Stop-Dosing
 Control 1 <-> Control 2 <-> GND: Reset-Dosing

DUK-...E34R, DUK-...G34R Plug Connection



Order Details (Example: DUK-11 G4H S300 L)

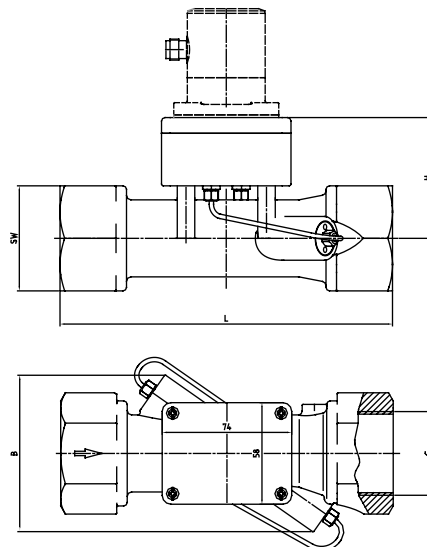
Model / Housing material	Connection*	Electronic	Flow direction								
<p>DUK-11 = brass</p> <p>DUK-12 = st. steel 1.4408</p> <p>DUK-21 = high temp. version brass</p> <p>DUK-22 = st. steel 1.4408 high temp. version</p>	<p>G4H = G ½ female</p> <p>G5H = G ¾ female</p> <p>G6H = G 1 female</p> <p>G8H = G 1½ female</p> <p>G9H = G 2 female</p> <p>GBH = G 3 female</p> <p>N4H = ½" NPT female</p> <p>N5H = ¾" NPT female</p> <p>N6H = 1" NPT female</p> <p>N8H = 1½" NPT female</p> <p>N9H = 2" NPT female</p> <p>NBH = 3" NPT female</p>	<p>Switching output S300 = relay, M12-plug S30D = aktiv 24 V_{DC}, M12-plug</p> <p>Frequency output F300 = M12-plug, 500 Hz F390 = M12-plug, 50...1000 Hz</p> <p>Analogue output L303 = M12-plug, 0-20 mA L343 = M12-plug, 4-20 mA L443 = DIN-plug, 4-20 mA</p> <p>Compact electronic C30R = 2x open collector, PNP C30M = 2x open collector, NPN C34P = 0(4)-20 mA, 1x open collector, PNP C34N = 0(4)-20 mA, 1x open collector, NPN</p> <p>ADI electronic</p> <table border="1"> <thead> <tr> <th>Display</th> <th>Power supply</th> <th>Output</th> <th>Contacts</th> </tr> </thead> <tbody> <tr> <td>K = bar graph/digital display</td> <td>0 = 100-230 V_{AC/DC} 3 = 18-30 V_{AC}, 10-40 V_{DC}</td> <td>0 = without 4 = 0(4)-20 mA, 0-10 V</td> <td>2 = 2 change-over contacts</td> </tr> </tbody> </table> <p>Counter electronic E14R = LCD, 0(4)-20 mA, 2 x relays, 1 m cable E34R = LCD, 0(4)-20 mA, 2 x relays, M12-plug</p> <p>Dosing electronic G14R = LCD, 0(4)-20 mA, 2 x relays, 1 m cable G34R = LCD, 0(4)-20 mA, 2 x relays, M12-plug</p>	Display	Power supply	Output	Contacts	K = bar graph/digital display	0 = 100-230 V _{AC/DC} 3 = 18-30 V _{AC} , 10-40 V _{DC}	0 = without 4 = 0(4)-20 mA, 0-10 V	2 = 2 change-over contacts	<p>L = from left to right</p> <p>R = from right to left</p> <p>T = from top to bottom</p> <p>B = from bottom to top</p>
Display	Power supply	Output	Contacts								
K = bar graph/digital display	0 = 100-230 V _{AC/DC} 3 = 18-30 V _{AC} , 10-40 V _{DC}	0 = without 4 = 0(4)-20 mA, 0-10 V	2 = 2 change-over contacts								

* Standard display in l/min, optional: display GPM (code G instead of H)

Dimensions DUK-Sensor

Model	G/NPT	SW [mm]	H [mm]	H* [mm]	L [mm]	B [mm]
DUK-xxx4	½"	30	57.5	77.5	114	approx. 72
DUK-xxx5	¾"	36	59.5	79.5	126.5	approx. 76
DUK-xxx6	1"	46	63.5	83.5	146	approx. 80
DUK-xxx8	1½"	60	69.5	89.5	190	approx. 90
DUK-xxx9	2"	76	74.5	94.5	238	approx. 97
DUK-xxxB	3"	105	84.5	104.5	306	approx. 122

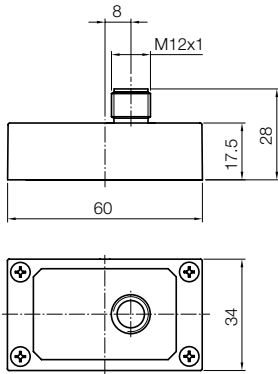
* High Temp.-Version



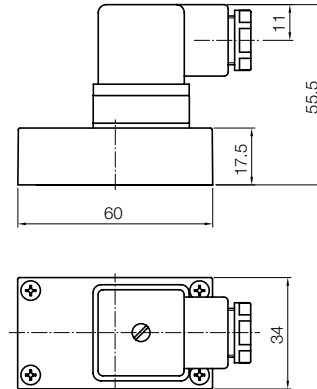


Dimensions

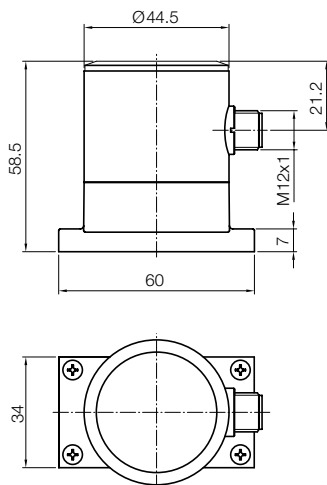
DUK-...S30x, DUK-...F3x0, DUK-...L3x3



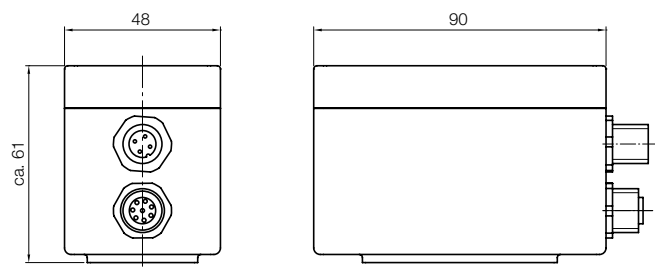
DUK-...L443



DUK-...C3xx



DUK-...ExxR, DUK-...GxxR



DUK with ADI electronic

